

Color Country Interagency Fire Management Area



Dalton Wash



Left Fork



2022 Fire Season

Color Country Interagency Fire Center

Color Country Interagency Fire Center (CCIFC) response area is approximately 13.5 million acres of Federal, State, and Private Lands. CCIFC dispatches for the following agencies: Color Country District Office BLM (CCD), Paria River District (PRD), Grand Staircase Escalante National Monument BLM (GSENM), Arizona Strip District Office BLM (ASD), Dixie National Forest (DIF), Zion National Park (ZIP), Glen Canyon National Recreation Area (GLP), Bryce Canyon National Park (BRP), Cedar Breaks National Monument (CBP), Grand Canyon-Parashant (PAP), Vermillion Cliffs National Monuments BLM (ASD), Pipe Spring National Monument (PIP), Southern Paiute Field Office BIA (SPA), Fish and Wildlife Services (FWS), Utah Division of Forestry, Fire, and State Lands (SWS) which includes the five southwest counties of Utah and multiple municipalities, and State of Arizona (A1S).

Fire season started mid-April and continued through the beginning of August. In May and June Color Country was experience higher than normal ERC percentages, and went into Stage I fire restrictions on June 6th and Lifted the restrictions on August 12th. The Energy Release Components (ERC) remained near record levels until the monsoonal weather pattern brought heavy rains toward the end of July and into August.

There were 280 fires for 7,102 acres this season. Human caused fires accounted for 29% of all fires and 67% of the total acres burned. The Southwest State of Utah accounted for 46% of the human caused fires and only 14% of the acres burned. Dixie National Forest accounted for 10% of the human caused fires with 89% of the acres burned. Color Country resources responded to 458 smoke reports this season: 280 wildfires, 18 incorporated assists, and 160 false alarms. Color Country hosted three Type 3 Incident Management Team (IMT) and one Type 2 Incident Management Team. Brandon Davis and Greg Bartin's Type 3 IMTs were assigned to the Left Fork fire on the Dixie National Forest. Greg Bartin's T3 IMT was assigned to the Dalton Wash fire on the Color Country District BLM. Great Basin IMT Team 6 (Jeremy Kiesling) was assigned to the Left Fork fire on the Dixie National Forest.

Color Country Interagency Fire Management Area was the host of 5 exclusive use aircraft for 2022:

- T1 Helicopter - CDC – CWN/EU – HT-3CK/HT-718 – DIF
- T1 Helicopter – CDC – HT-611CK - SWS
- T3 Helicopter - SGU – H-7BS - ASD
- Air Attack - CDC – AA-0FD - CCD
- 2 SEATs - CDC - T-892 & T-895 - CCD

Color Country Air Center/Cedar City Tanker Base pumped a total of 548,876 gallons of retardant this fire season.

CCIFC touched 5,785 orders in IROC. CCIFC processed approximately, 383 aircraft, 76 crew, 427 equipment, 849 overhead, and 2,465 supplies orders in IROC.

Color Country Fire Management Area

13,552,812 Acres

<u>Agency</u>	<u>Acres</u>
Color Country District BLM	2,733,215
Paria River District BLM	<u>2,419,256</u>
CPD Total	5,152,471
Arizona Strip District BLM	1,980,997
Grand Canyon- Parashant NM (BLM Only)	939,213
Vermillion Cliffs NM	<u>293,680</u>
ASD Total	3,113,890
Arizona - State	206,209
Arizona - Private	<u>137,928</u>
Arizona Total	344,137
Southern Paiute Agency	
Kaibab Reservation	120,798
Shivwits Reservation	28,154
Cedar Band Reservation	2,050
Indian Peaks Band Reservation	<u>425</u>
SPA Total	151,427
Dixie National Forest	1,884,467
Forestry, Fire, and State Lands	101,720
Unincorporated Private	<u>1,359,216</u>
SWS Total	1,460,936
Zion National Park	148,732
Glen Canyon National Recreation Area	1,254,429
Cedar Breaks National Monument	6,155
Bryce Canyon National Park	35,968
Pipe Springs National Monument	40
Rainbow Bridge National Monument	160
NPS Total	1,445,484
CCIMA Total	13,552,812

2022 CCIFC FIRE STATISTICS



DIXIE NATIONAL FOREST						
Ranger District	Natural Fires	Natural Acres	Human Fires	Human Acres	Total Fires	Total Acres
Pine Valley	13	10.9	1	0.3	14	11
Cedar City	6	0.6	5	1.2	11	2
Powell	7	0.7	1	4,231.3	8	4,232
Escalante	8	1.4	1	0.1	9	1
Total	34	14	8	4,233	42	4,246



UTAH DIVISION OF FORESTRY, FIRE, AND STATE LANDS						
County	Natural Fires	Natural Acres	Human Fires	Human Acres	Total Fires	Total Acres
Beaver	5	0.7	2	0.2	7	1
Garfield	2	0.2	3	2.9	5	3
Kane	12	1.8	5	10.3	17	12
Iron	11	1.1	15	12.1	26	13
Washington	6	225.3	10	227.5	16	453
Total	36	229	36	253	72	482



COLOR COUNTRY DISTRICT BLM						
Field Office	Natural Fires	Natural Acres	Human Fires	Human Acres	Total Fires	Total Acres
Cedar City	40	31.4	3	0.5	43	32
St. George	6	1,922.6	11	272.8	17	2,195
Total	46	1,954	14	273	60	2,227
PARIA RIVER DISTRICT BLM						
Field Office	Natural Fires	Natural Acres	Human Fires	Human Acres	Total Fires	Total Acres
GSENM	9	2.9	0	0.0	9	3
Kanab	26	5.6	4	1.3	30	7
VCNM	0	0	0	0.0	0	0
Total	35	9	4	1	39	10
CCD Total	81	1,963	18	275	99	2,237



NATIONAL PARK SERVICE						
Park/NM NRA	Natural Fires	Natural Acres	Human Fires	Human Acres	Total Fires	Total Acres
Bryce Canyon	1	0.1	0	0.0	1	0.1
Cedar Breaks	0	0.0	0	0.0	0	0
Glen Canyon	1	0.1	1	10	2	10
Zion	6	17.7	4	0.4	10	18
Total	8	18	5	10	13	28



ARIZONA STRIP DISTRICT BLM						
Field Office / Monument	Natural Fires	Natural Acres	Human Fires	Human Acres	Total Fires	Total Acres
Arizona Strip	17	96.4	9	3.8	26	100
GCPNM	7	1.1	0	0	7	1
VCNM	7	1.0	0	0	7	1
Total	31	99	9	4	40	102



STATE OF ARIZONA						
	Natural Fires	Natural Acres	Human Fires	Human Acres	Total Fires	Total Acres
State	3	0.3	1	0.25	4	0.6
Private	0	0.0	2	1.1	2	1
Total	3	0.3	3	1	6	2



SOUTHERN PAIUTE AGENCY						
	Natural Fires	Natural Acres	Human Fires	Human Acres	Total Fires	Total Acres
Arizona	6	4.9	0	0.0	6	5
Utah	0	0.0	0	0.0	0	0
Nevada	0	0.0	2	0.2	2	0.2
Total	6	5	2	0	8	5



COLOR COUNTRY INTERAGENCY FIRE CENTER						
	Natural Fires	Natural Acres	Human Fires	Human Acres	Total Fires	Total Acres
Total	199	2,327	81	4,775	280	7,103

Large Fires

(100 acres or more / Team Fires)

Name	Type	Start Date	Org.	ASD Acres	AS1 Acres	CPD Acres	DIF Acres	NPS Acres	SPA Acres	SWS Acres	Other Acres	Total Acres	Incident Commander
Left Fork	2	5/9	DIF				4,231					4,231	Keisling's T2 IMT
Dalton Wash	3	6/9	CPD			164				215		379	Bartin's T3 IMT
Apple Valley	4	7/12	SWS							150		150	Karson Sorenson
Dodge Spring	2	7/21	ELD			1,922				55	3,663	5,640	Keisling's T2 IMT

The Left Fork fire May 9th was a human caused fire on the Powell Ranger District of the Dixie National Forest. The fire was Southeast of Panquitch, UT. The fire transitioned to Color Country T3 IMT One (Brandon Davis) on June 19th with Korby Fraughton as the ICT3 trainee. The fire transitioned to Great Basin T2 IMT Six (Jeremy Kiesling) on June 26th. The fire transitioned down to Color Country T3 IMT Two (Greg Bartin) on July 3rd with Korby Fraughton as the ICT3 trainee. The fire transitioned back to the local unit on July 9th. Final acreage was 4,231.28.



The Dalton Wash was a human caused fire that started June 9th on the St. George Office of the Color Country District BLM. The fire was located off MM 20 on SR9, East of Virgin, UT. The fire transitioned to Color Country T3 IMT Two (Greg Bartin) on June 10th with Micah Suwyn as the ICT3 trainee. The fire transitioned back to a Type 4 incident command on June 26th. The Flat fire was multi-jurisdictional, burning BLM land, state land in Iron County, and private lands in Iron and Washington County. The fires final size was 14,366 acres.

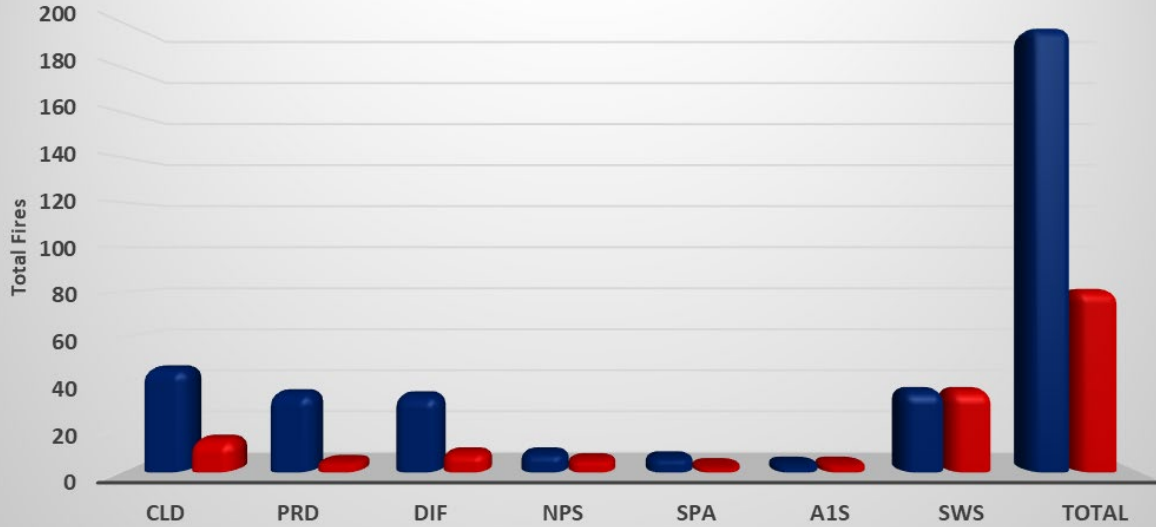


The Dodge Spring fire a natural caused fires that started July 21st on the Ely District BLM. The fire was approximately 35 miles Northwest of St. George, UT. The fire transitioned to Great Basin T2 IMT Six (Jeremy Kiesling) on June 24th. The Dodge Springs fire was originally thought to be with in Color Country but when verified by aircraft the fire was actual located in Nevada. Color Country and Ely dispatches coordinated efforts to get initial attack resources on scene. The fire was multi-jurisdictional burning onto the Doc Pass Wilderness on the St. George Field Office (BLM), and Utah State lands in Washington County. Fires final size was 5,640 acres.



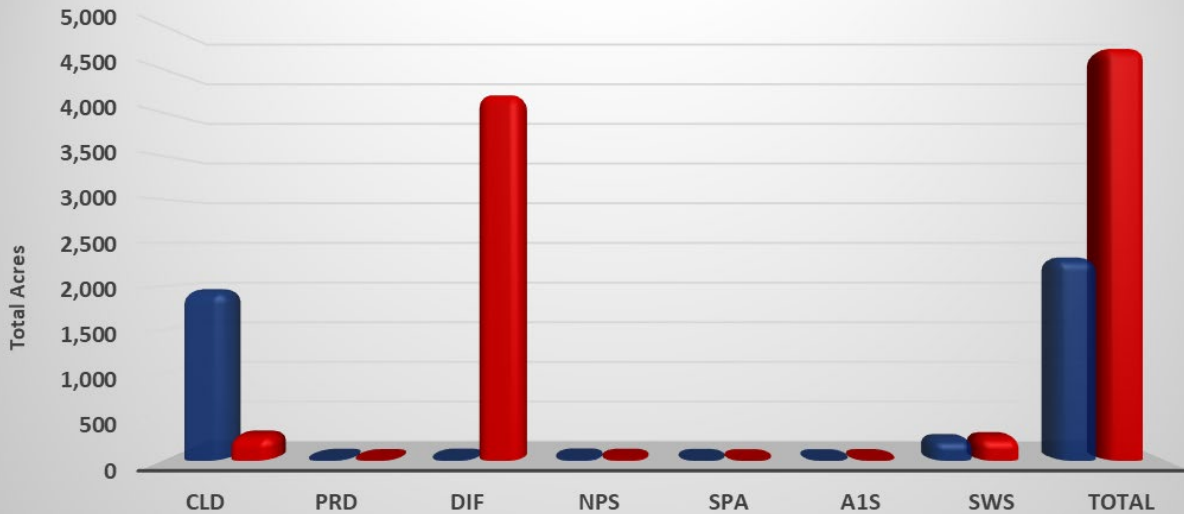
CCIFC 2022 Fire Season

Fires by Agency



	CLD	PRD	DIF	NPS	SPA	A1S	SWS	TOTAL
Natural	46	35	34	8	6	3	36	199
Human	14	4	8	5	2	3	36	81

Acres By Agency



	CLD	PRD	DIF	NPS	SPA	A1S	SWS	TOTAL
Natural	1,954	9	14	18	5	0	229	2,328
Human	273	1	4,233	10	0	1	253	4,775

Fires By Class Size								
	A	B	C	D	E	F	G	Agency Total
ASD	32	7	1	0	0	0	0	40
A1S	6	0	0	0	0	0	0	6
CPD	85	10	3	0	1	0	0	99
DIF	37	4	0	0	0	1	0	42
NPS	11	0	2	0	0	0	0	13
SPA	7	0	1	0	0	0	0	8
SWS	50	18	3	1	0	0	0	72
Class Total	228	39	10	1	1	1	0	280

A = 0.10 to 0.25 Acres

E = 300 to 999 Acres

B = 0.26 to 9 Acres

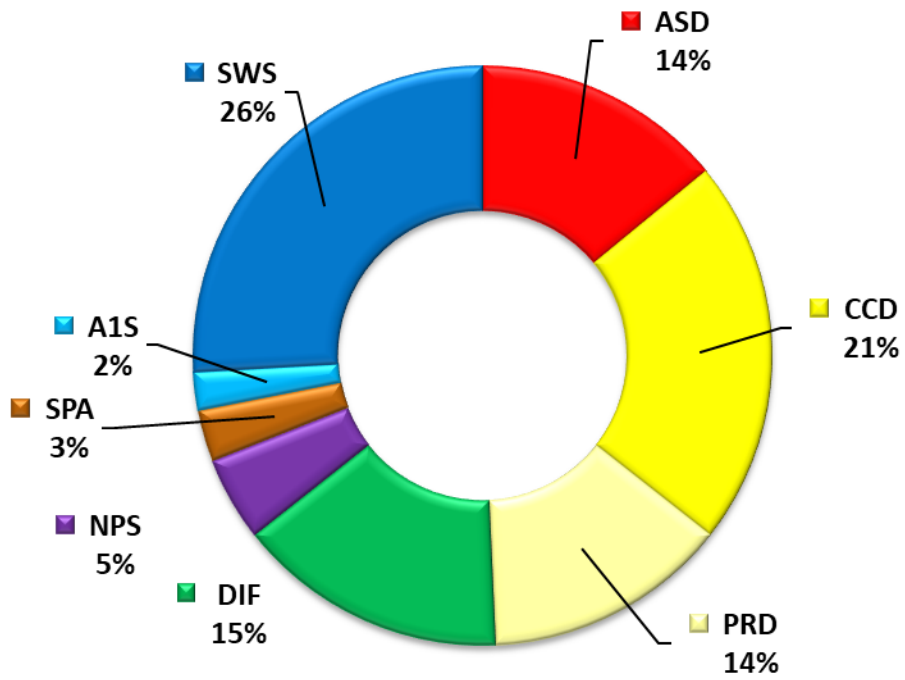
F = 1,000 to 4,999 Acres

C = 10 to 99 Acres

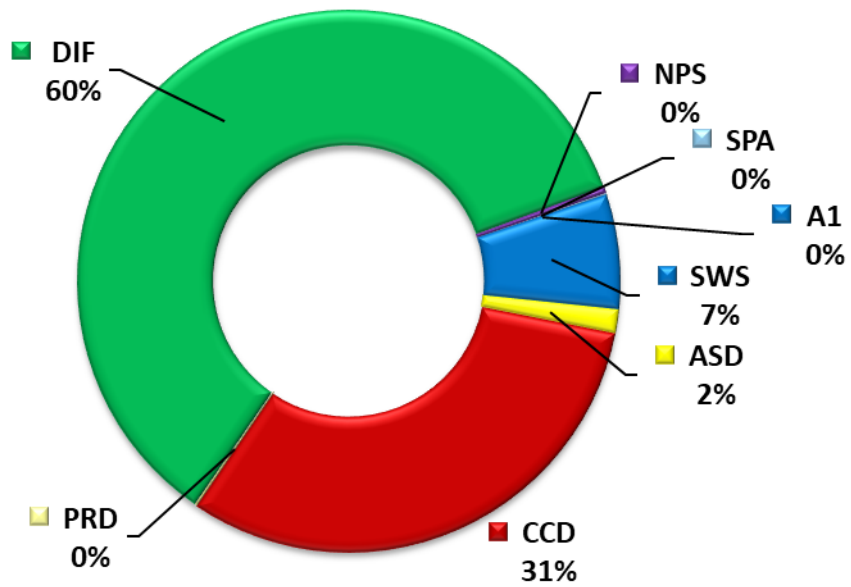
G = 5,0000 or Greater Acres

D= 100 to 299 Acres

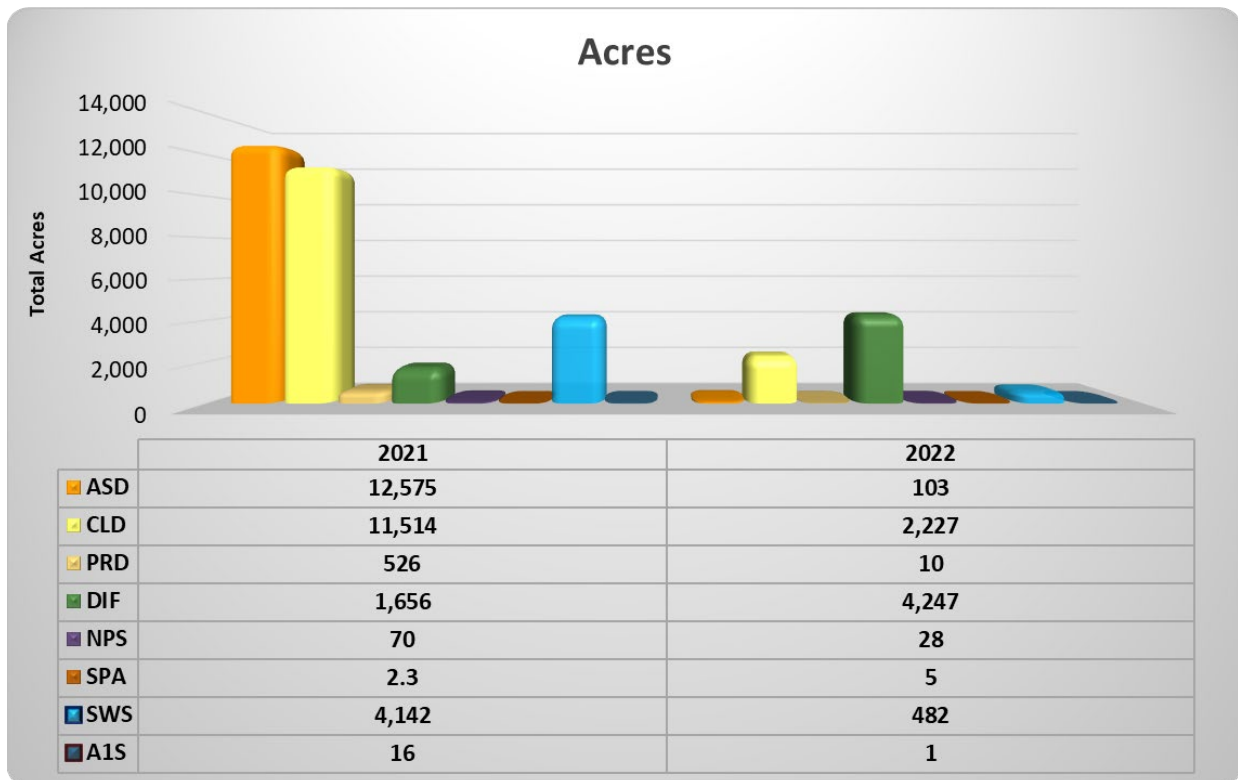
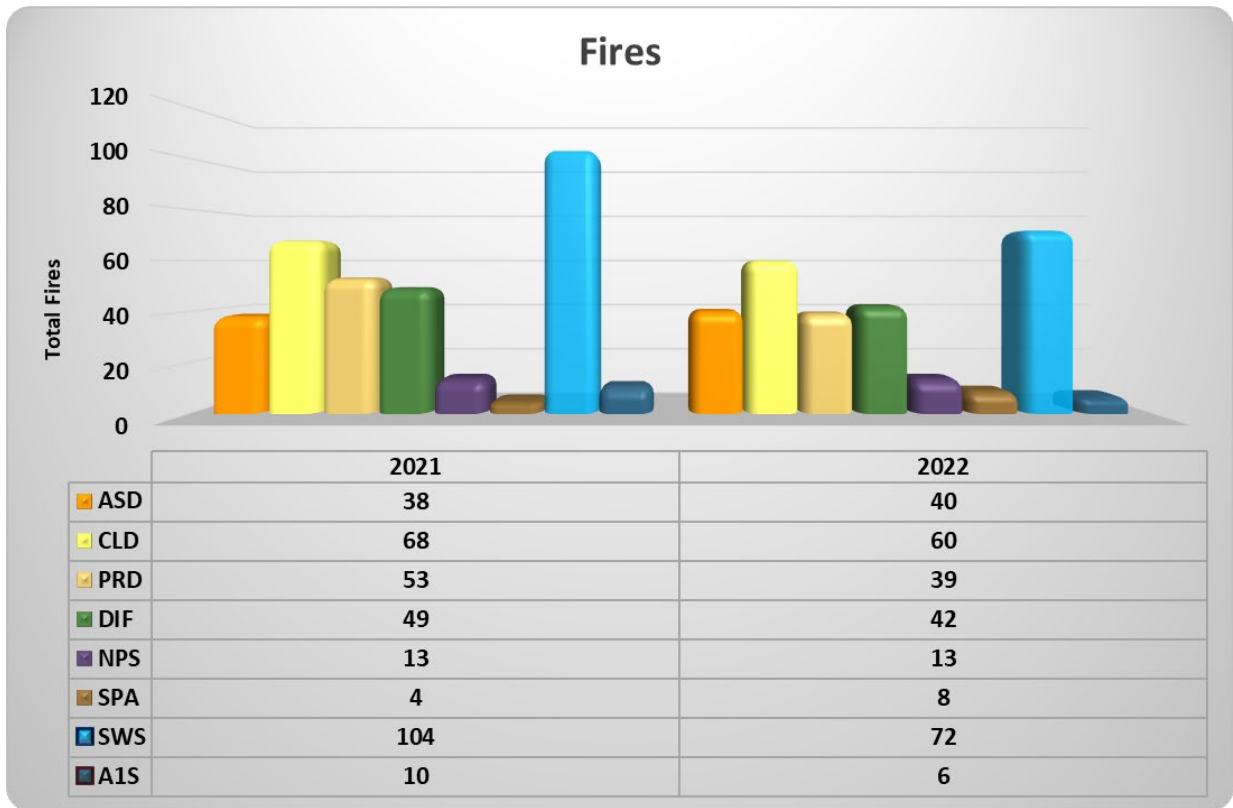
Percent of Total Fires by Agency



Percent of Total Acres By Agency

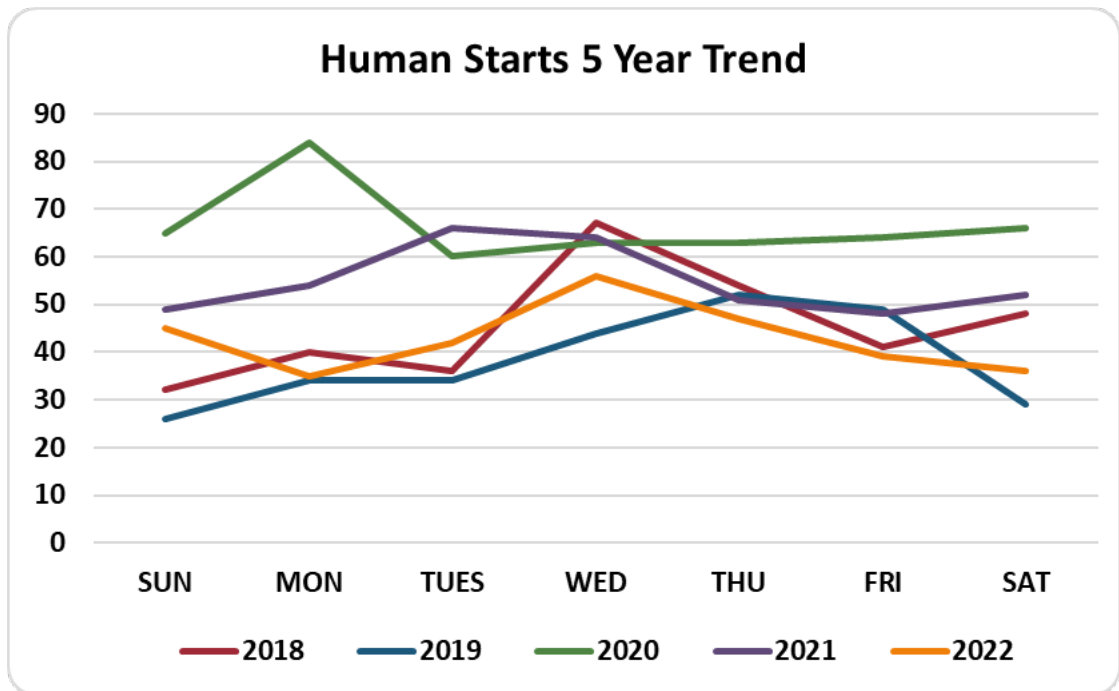
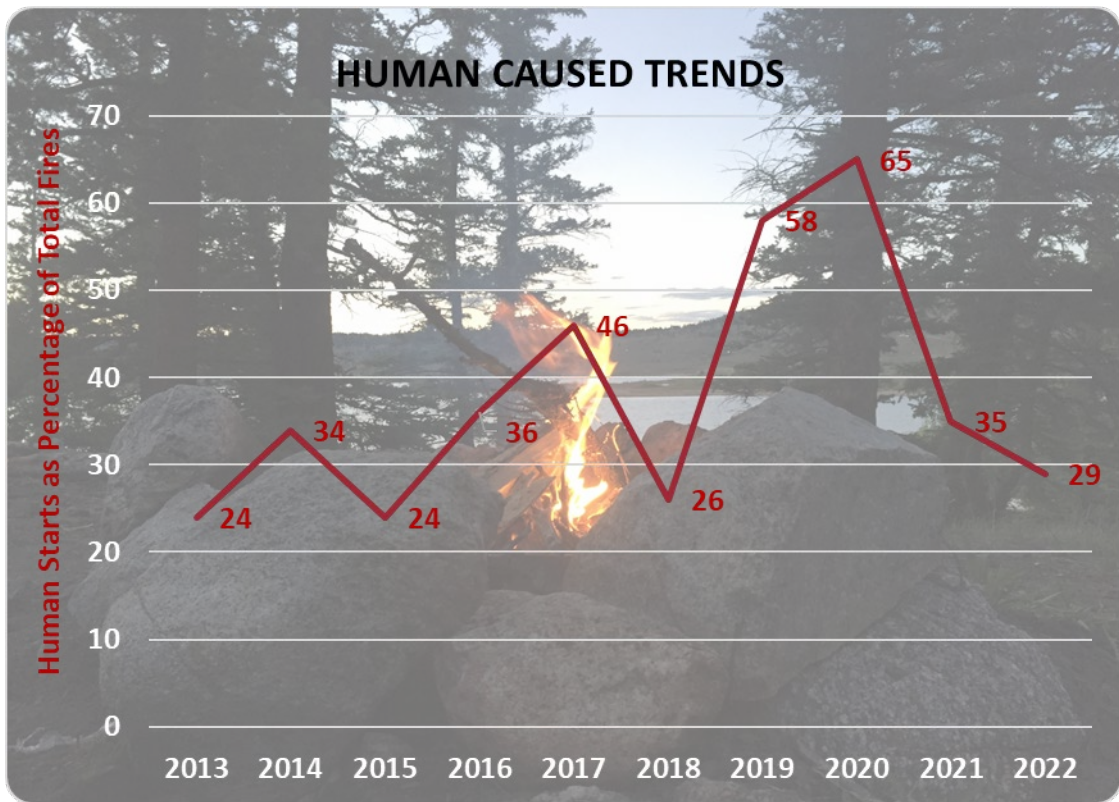


Two-Year Comparison

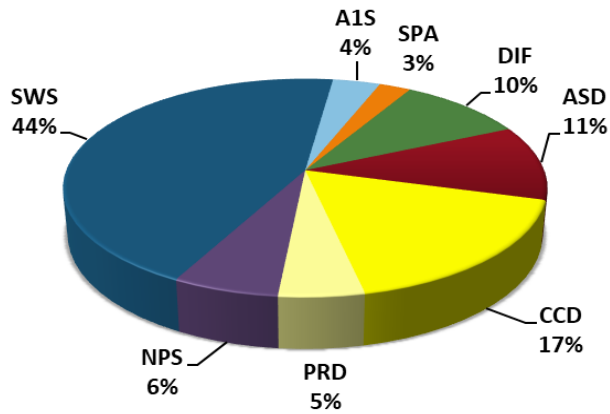


Incorporated Assists

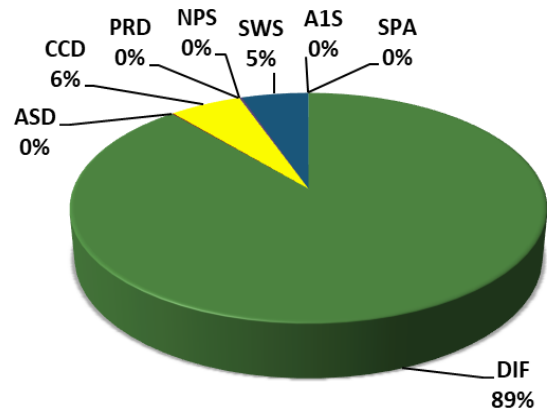
Date	Name	Natural Fires	Natural Acres	Human Fires	Human Acres
Beaver County					
Total		0	0.00	0	0.00
Garfield County					
11-May	Tropic Assist 01			1	20.00
Total		0	0.00	1	20.00
Kane County					
14-Aug	Glendale Assist 01	1	0.10		
Total		1	0.10	0	0.00
Iron County					
8-May	Enoch Assist 01			1	0.10
17-May	Cedar City Assist 01			1	1.40
25-May	Cedar City Assist 02			1	0.50
25-May	Cedar City Assist 03			1	0.10
10-Jul	Cedar City Assist 04	1	0.10		
18-Sep	Enoch Assist 02	1	0.10		
26-Sep	Kanaraville Assist 01			1	0.10
Total		2	0.20	5	2.20
Washington County					
5/12	Washington Assist 01			1	0.50
15-May	Toquerville Assist 01			1	10.00
25-May	St George Assist 01			1	0.01
29-May	Hurricane Assist 02			1	12.00
9-Jun	Hurricane Assist 03			1	0.50
12-Jun	Hildale Assist 01			1	1.50
16-Aug	Toquerville Assist 02			1	0.10
29-May	Washington Assist02			1	0.10
Total		0	0.00	8	24.71
Total	Utah Incorporated Assists	3	0.30	14	46.91



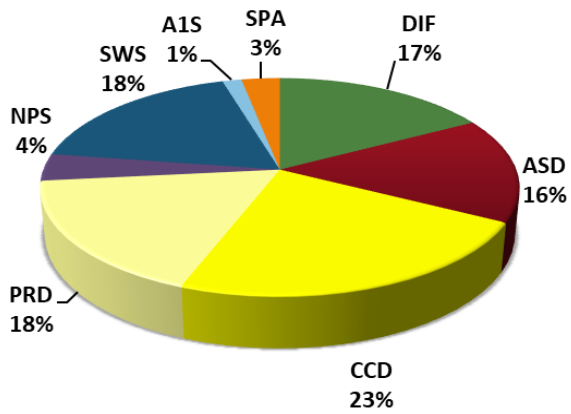
Human Caused Fires



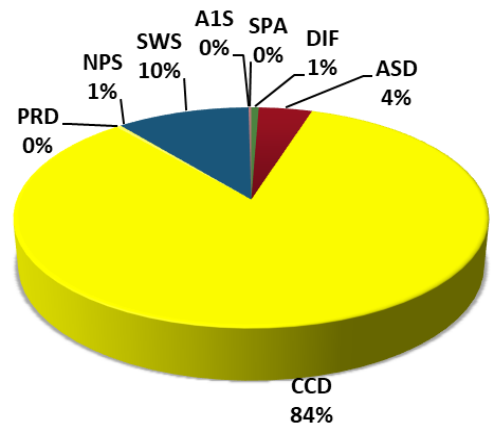
Human Caused Acres



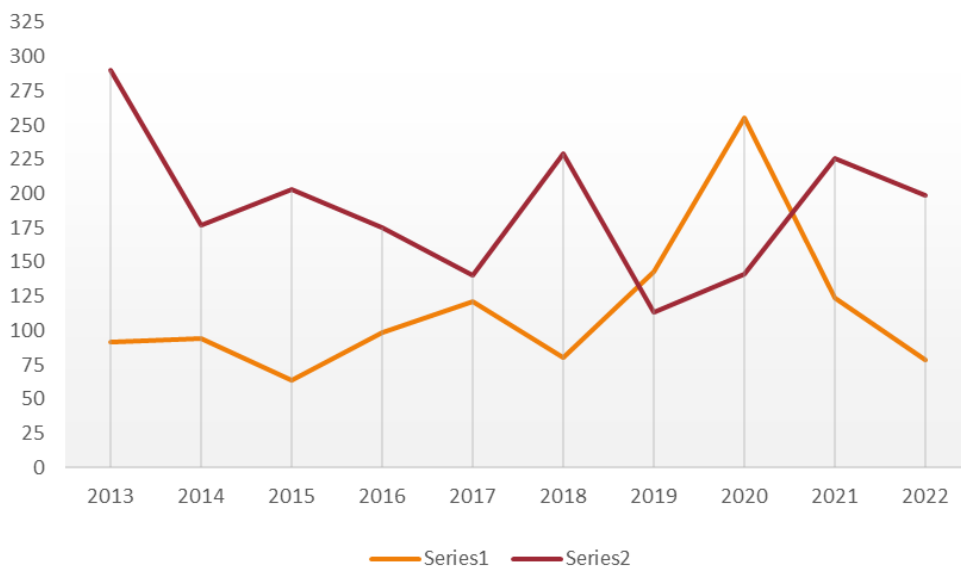
Natural Caused Fires



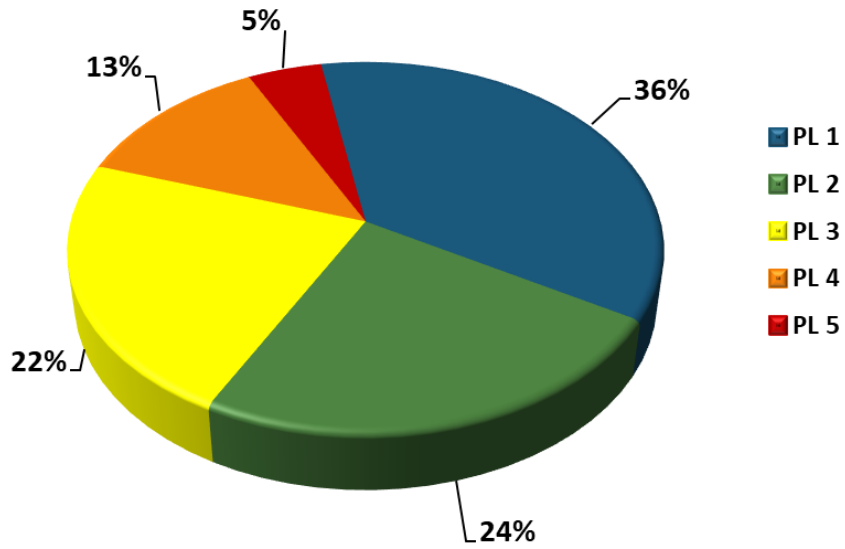
Natural Caused Acres



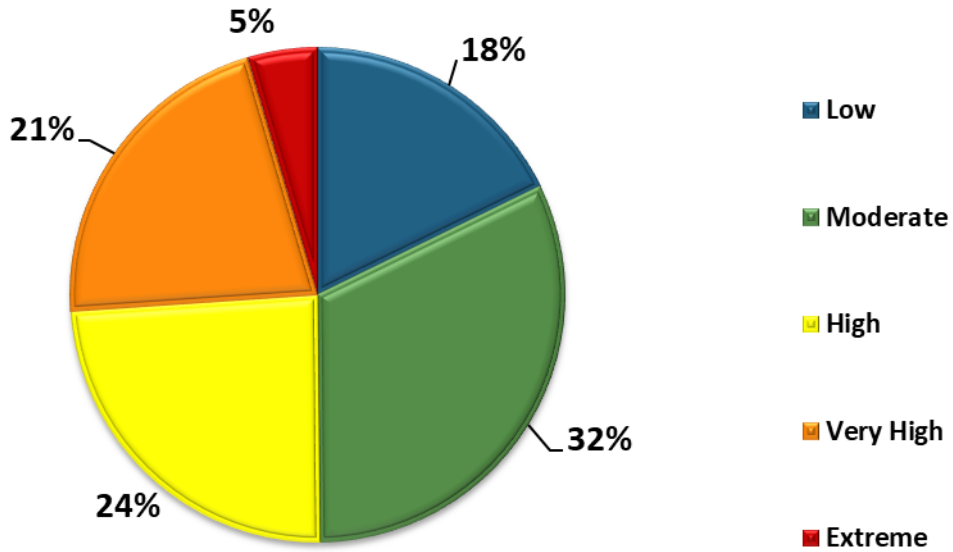
10 Yr. Cause Comparison



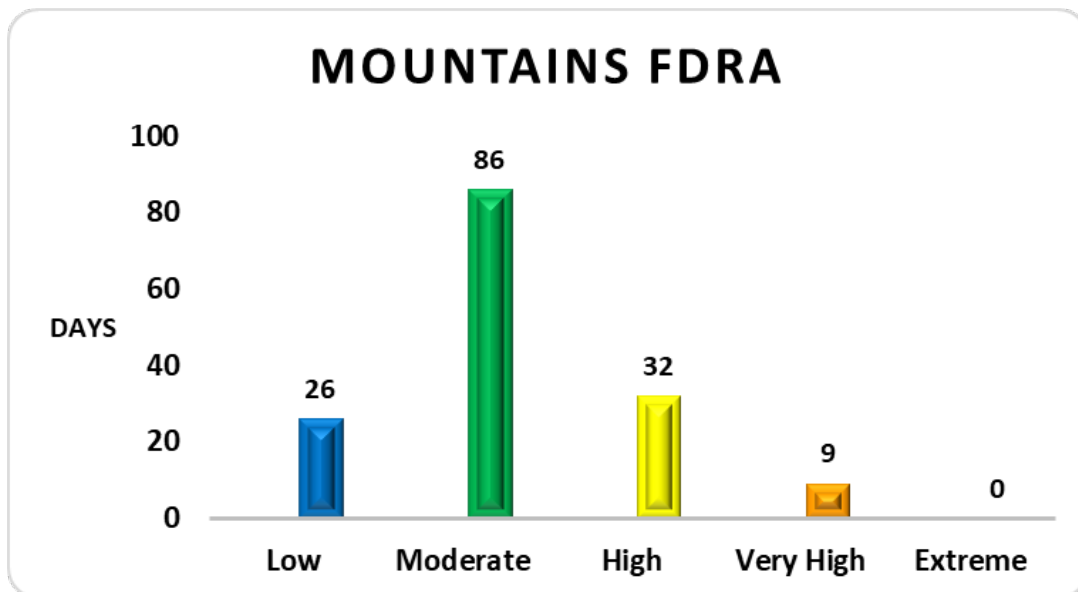
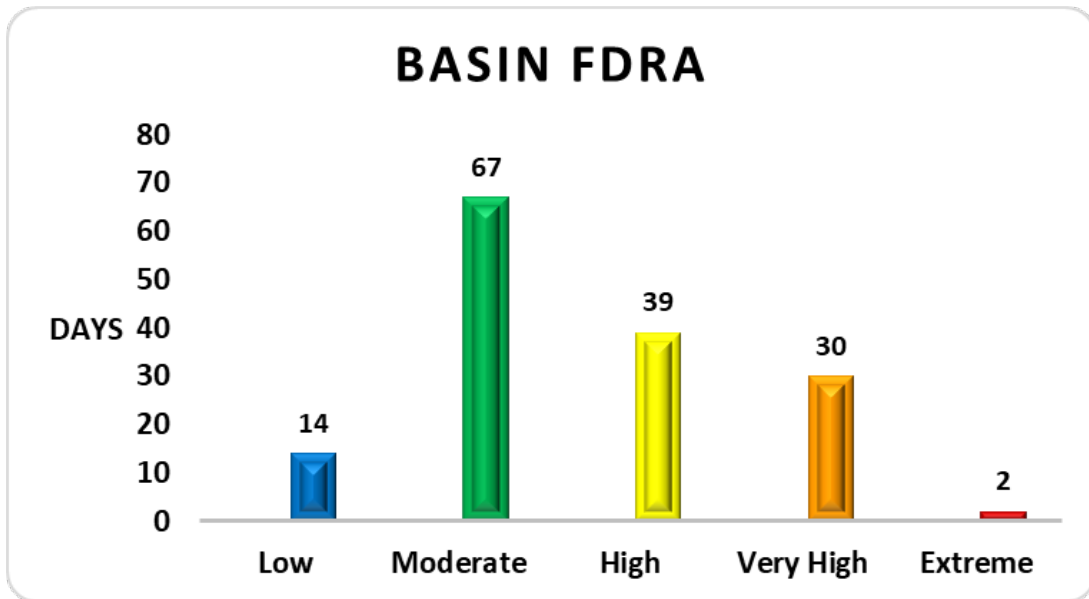
CCIFC Preparedness Level



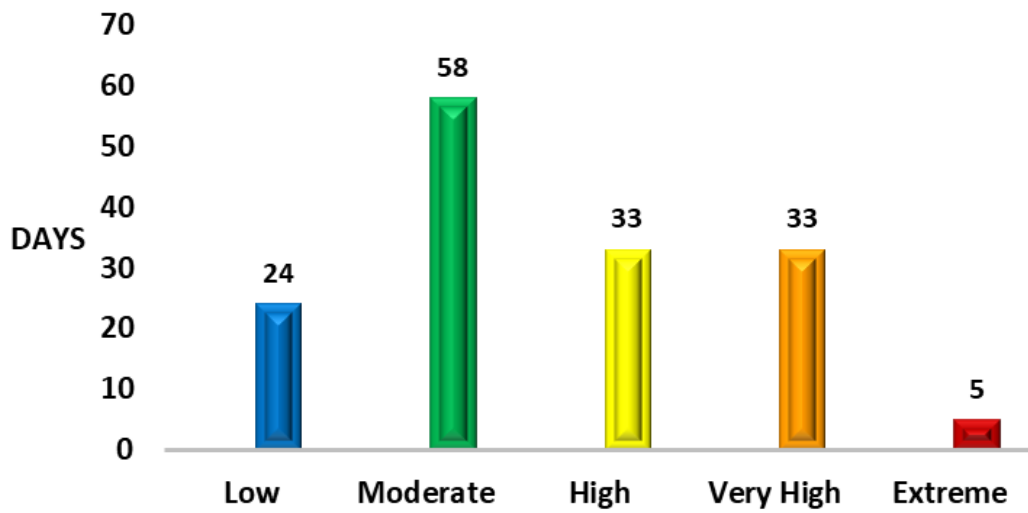
Percentage of Season by Fire Danger Rating



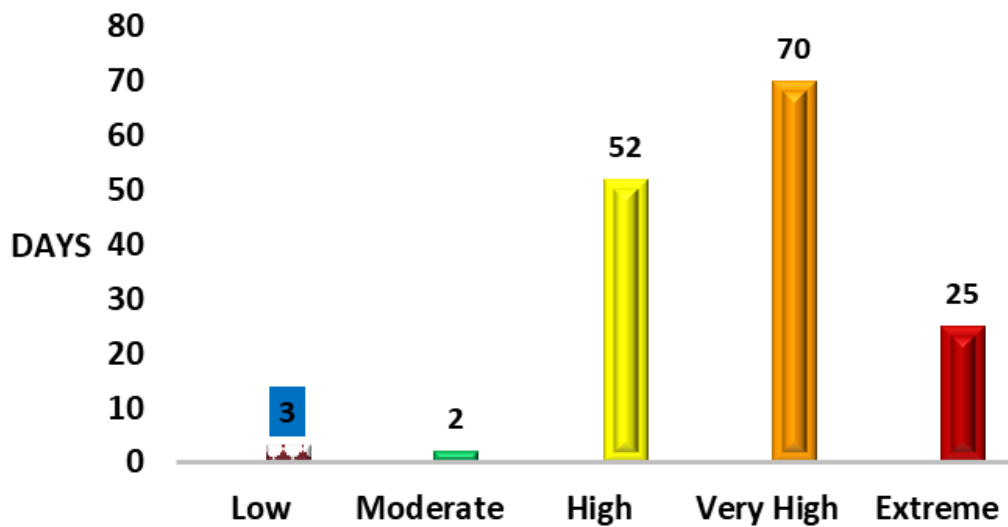
Fire Danger Rating Areas



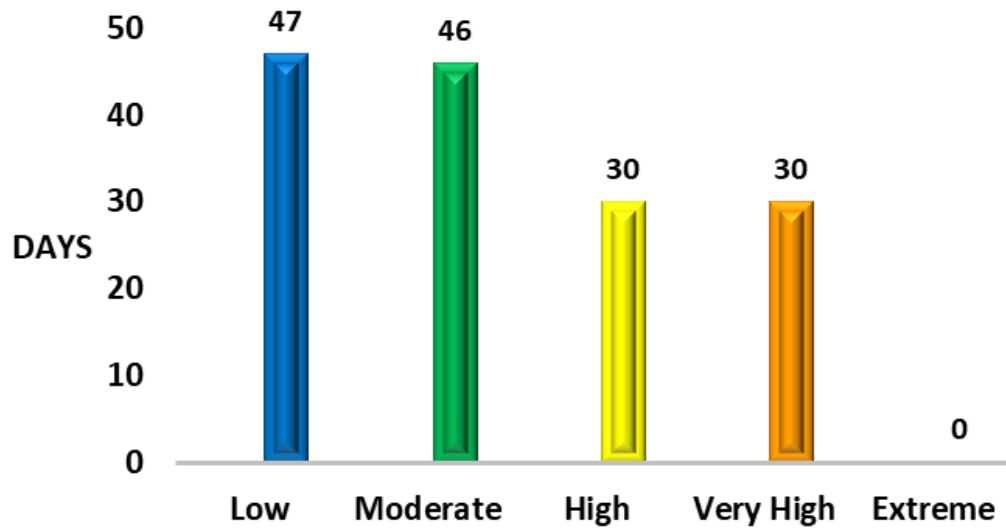
PLATEAU FDRA



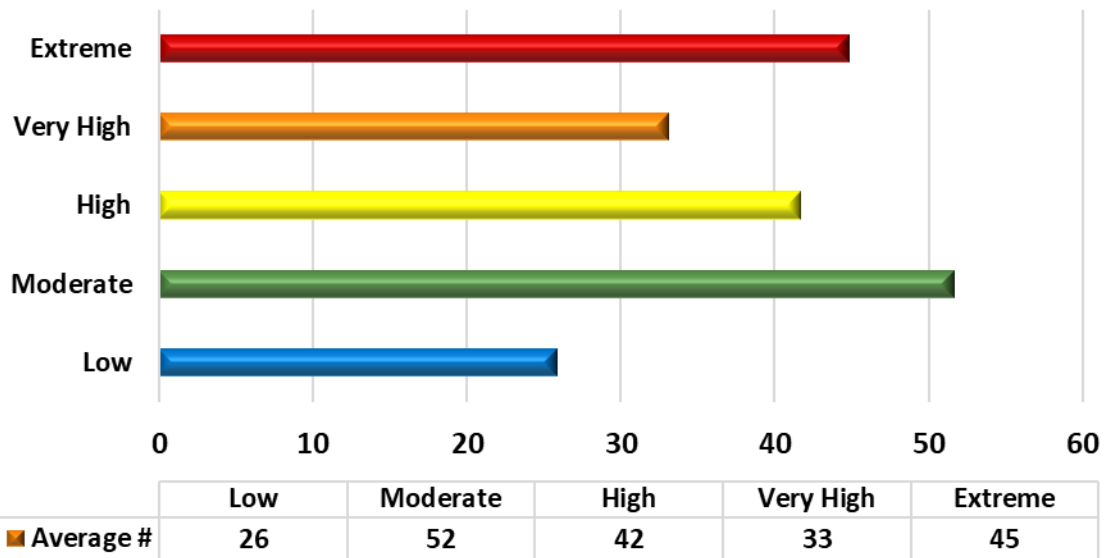
MOJAVE FDRA



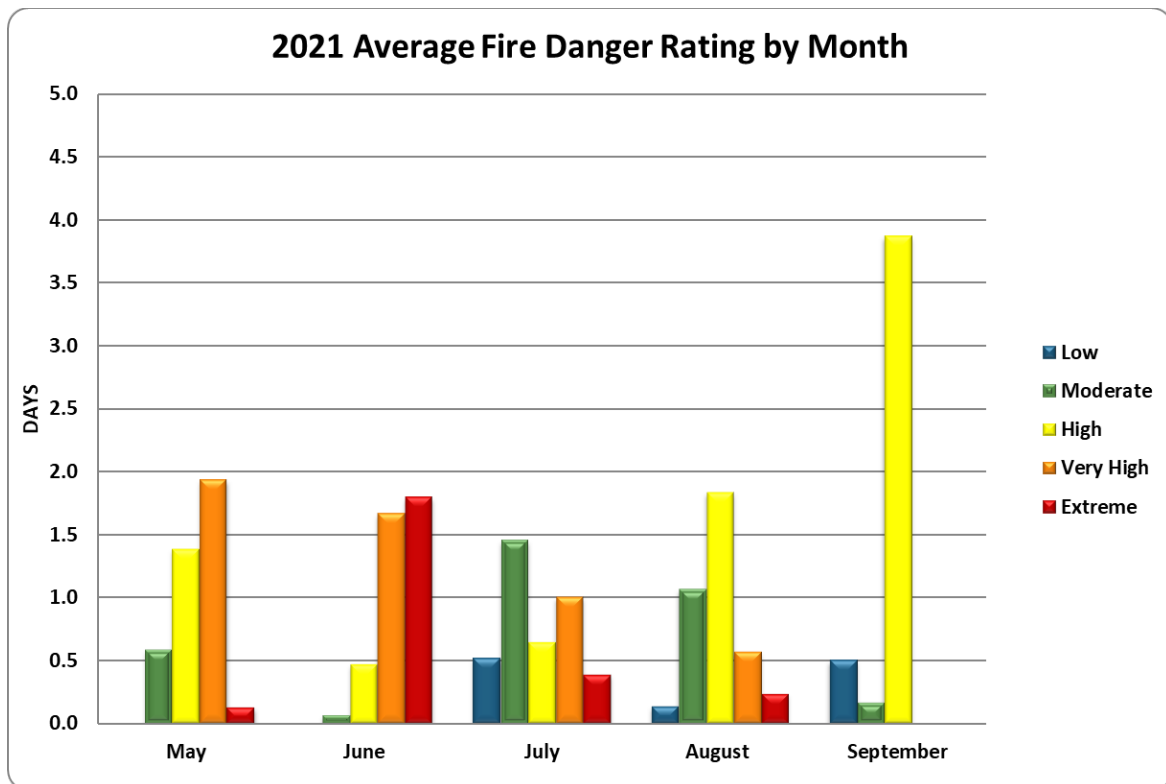
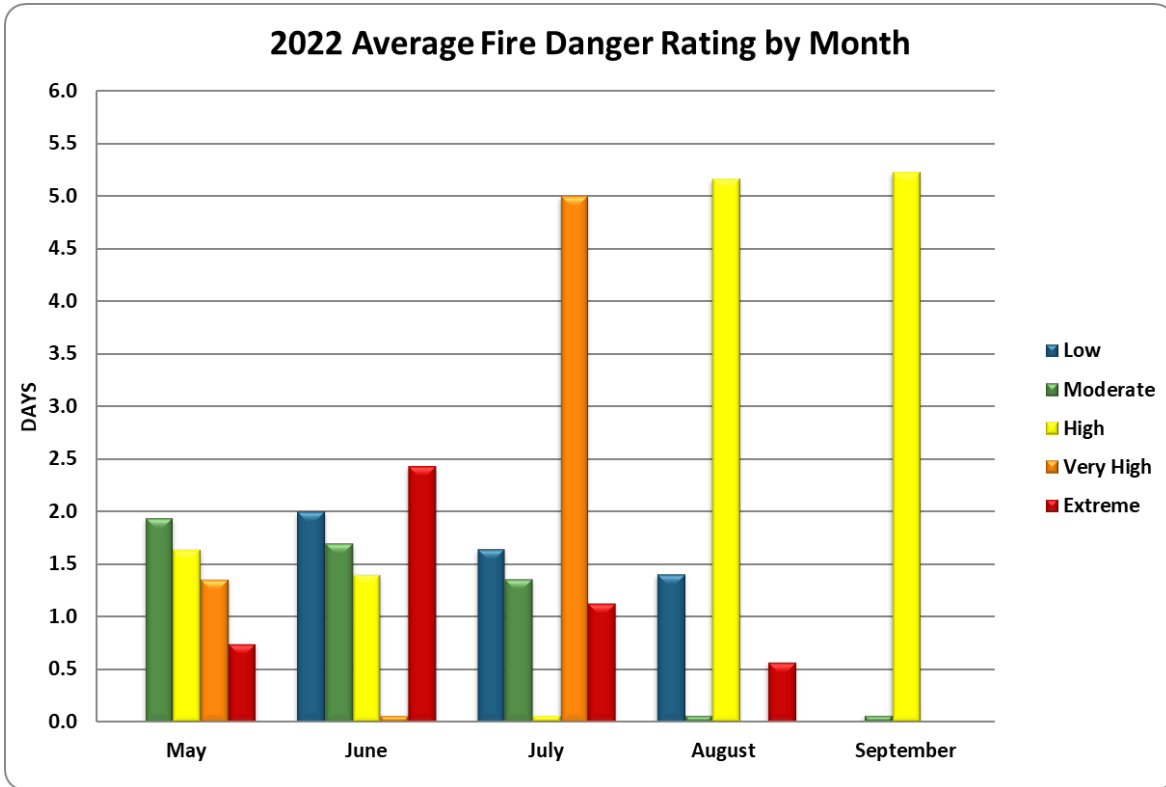
TRUMBULL FDRA



Average Amount of Days at Each FDR May-September



2022 & 2022 FDRA Comparison



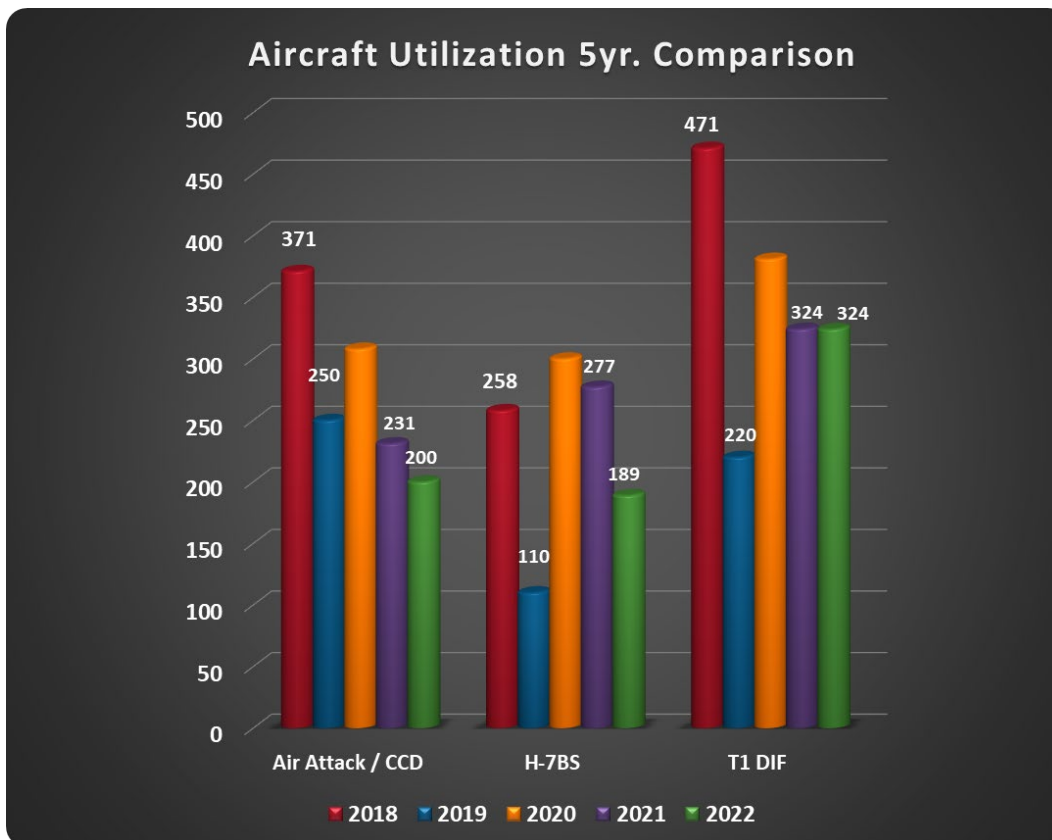
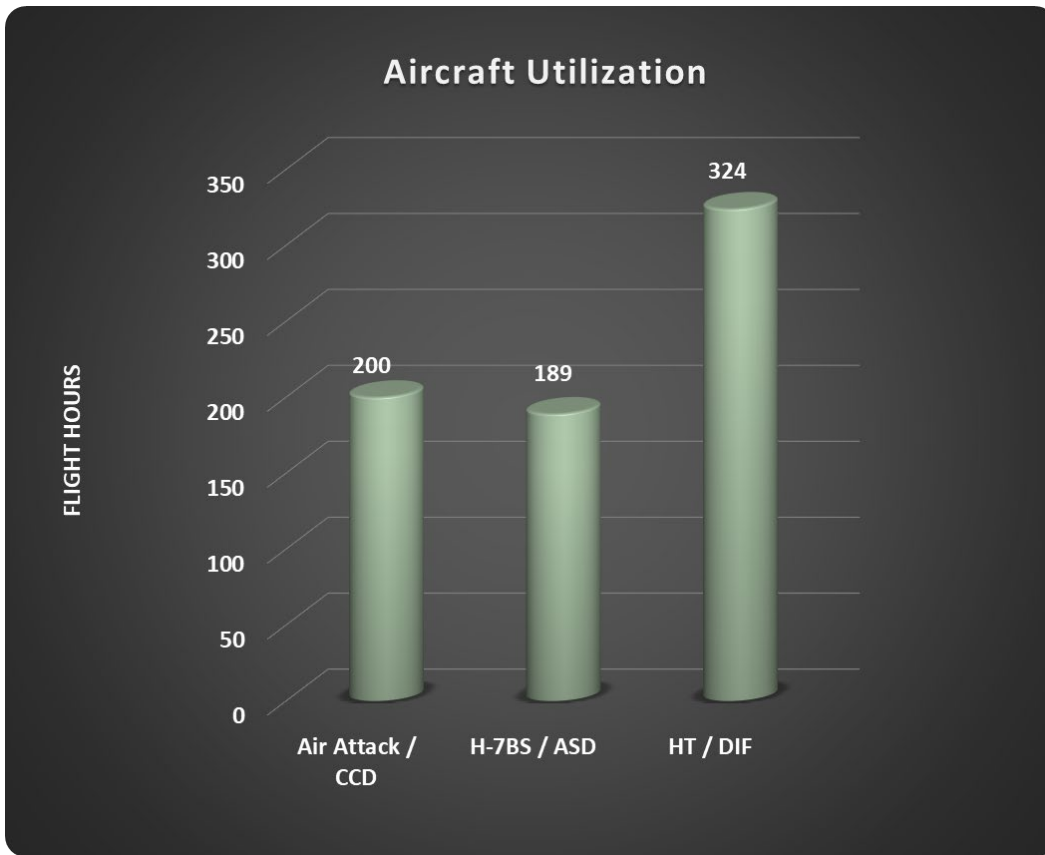
Prescribed Burns

Calendar year prescribed fire stats are as reported to CCIFC.

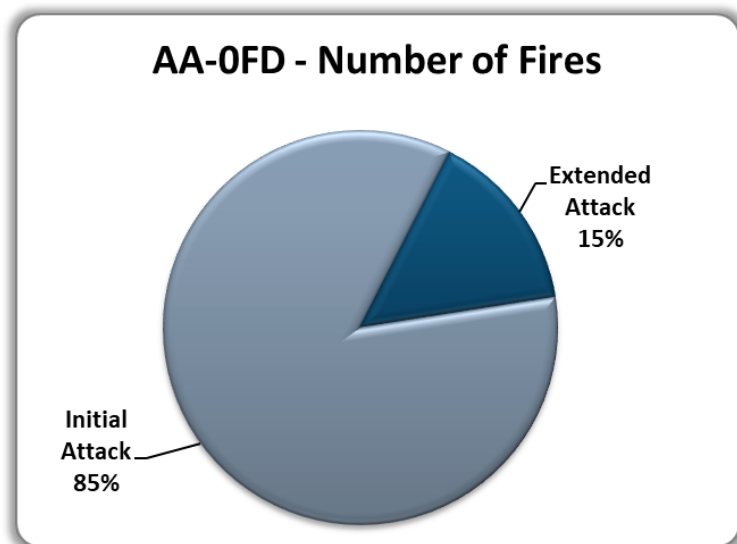
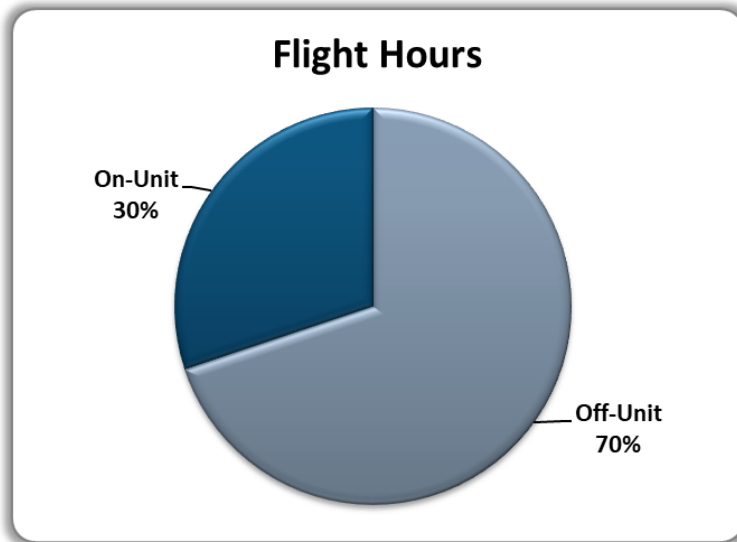
As of 12/31/2021.

Agency	Number of RX	RX Acres
Dixie National Forest Total	12	618
Pine Valley Ranger District	3	82
Cedar City Ranger District	7	302
Powell Ranger District	2	234
Escalante Ranger District	0	0
Color Country BLM	3	151
State of Utah Total	21	410
Beaver County	3	54
Garfield County	2	5
Kane County	2	60
Iron County	8	225
Washington County	6	66
Arizona Strip BLM	2	40
Bryce Canyon National Park	1	5
Cedar Breaks National Monument	0	0
Zion National Park	2	7
Total For CCIFC	41	1,231

Aircraft

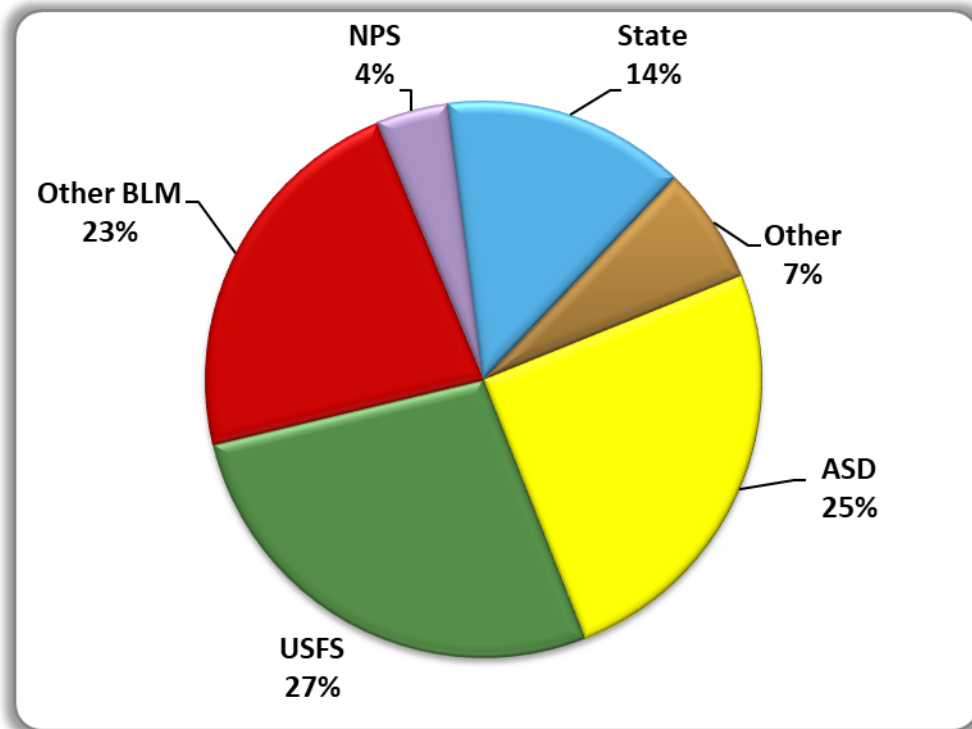


Air Attack N690FD – Color Country BLM



Contract	90 Days
Contract Extension	18 Days
Total Flight Hours	200
Total PAX	2
Initial Attack Fires	92
Extended Attack Fires	9

Type 3 Helicopter N237BS – Arizona Strip BLM



Number of Initial Attack Fires	35
Number of Extended Attack Fires	15
Number of Days on Extended Attack Fires	36 Days
Contract - Standard	90 Days
Contract Extension	32 Days
Total Flight Hours	277
Total PAX Transported	439
Total Gallons of Water	54,822
Total Pounds of Internal Cargo	21,110
Total Pounds of External Cargo	8,410

Type 1 Helicopter - Dixie N.F.

HT-159AC



Contract - Limited	4/23-7/23 (92 Days)
Contract Extension	0 Days
Total Flight Hours	84.1*
Total Gallons of Water	580,600
Total Gallons of Retardant	0

*Not including 5.4 hours to ferry to Cedar City to start contract.

HT-178

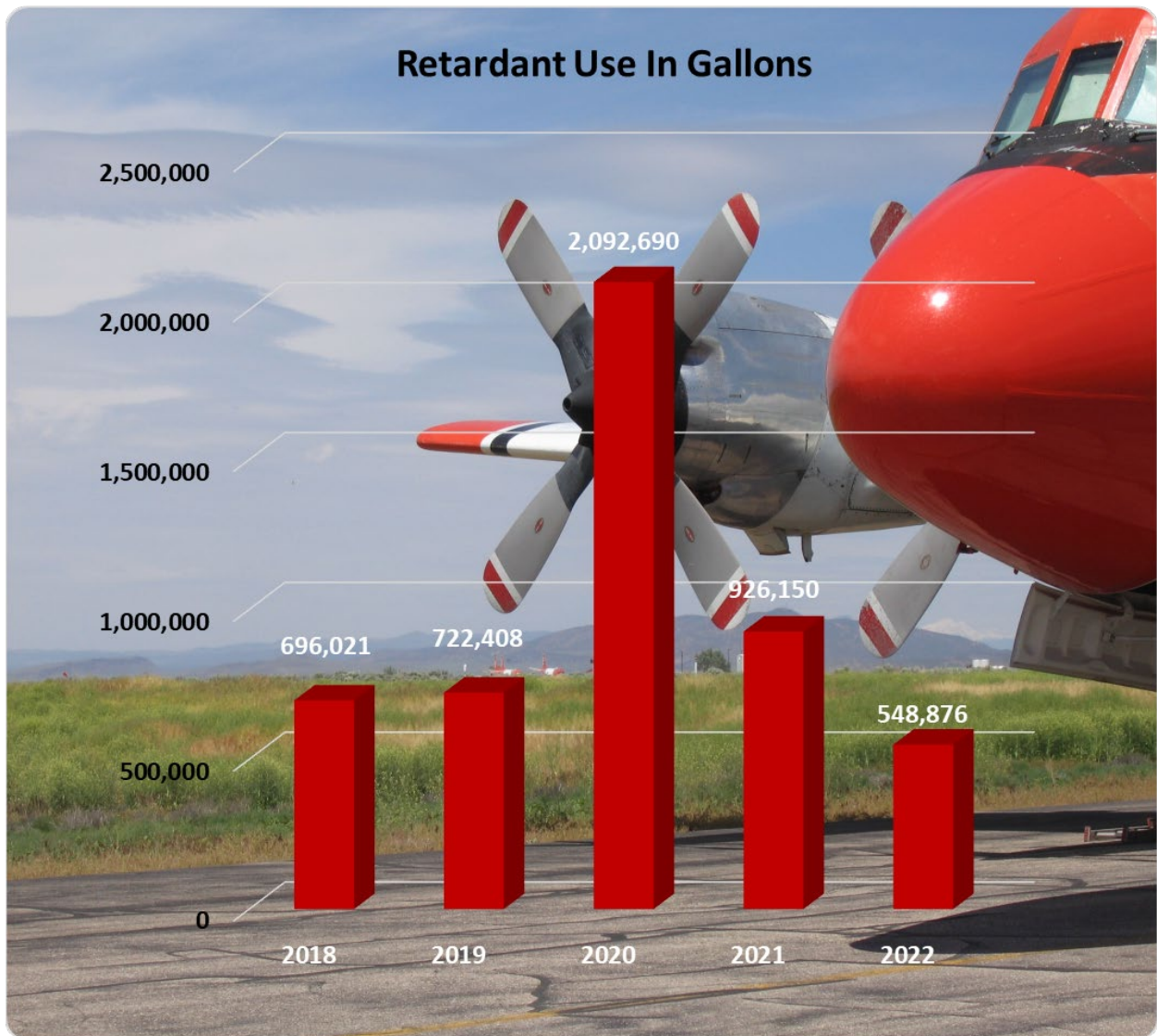


Contract - Limited	7/27-8/29 (34 Days)
Contract Extension	56 Days
Total Flight Hours	202.9*
Total Gallons of Water	1,972,600
Total Gallons of Retardant	17,750

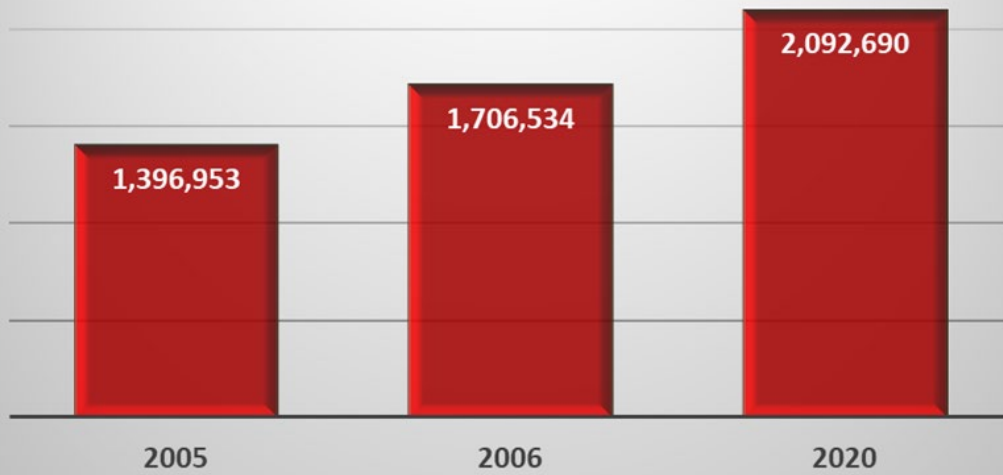
*Not including 5.4 hours to ferry to Cedar City to start contract.

Color Country Air Center

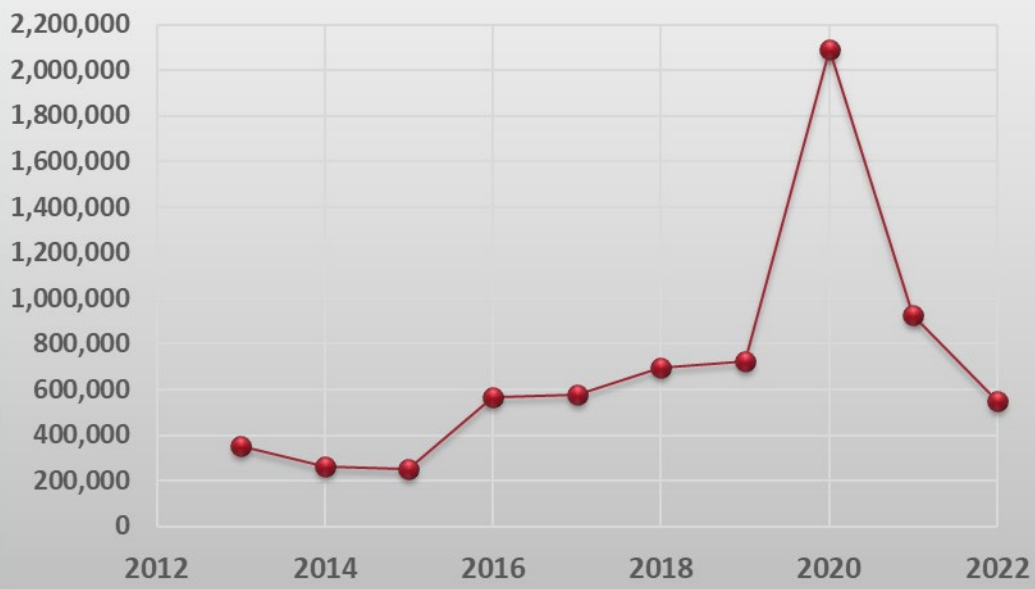
Color Country Air Center / Cedar City Tanker base filled 324 loads for a total 548,876 gallons of retardant and 2 loads of water for 6,000 gallons. The 10-year average for retardant pumped out of Cedar City Tanker Base is 656,332 gallons.



Large Retardant Year Comparison

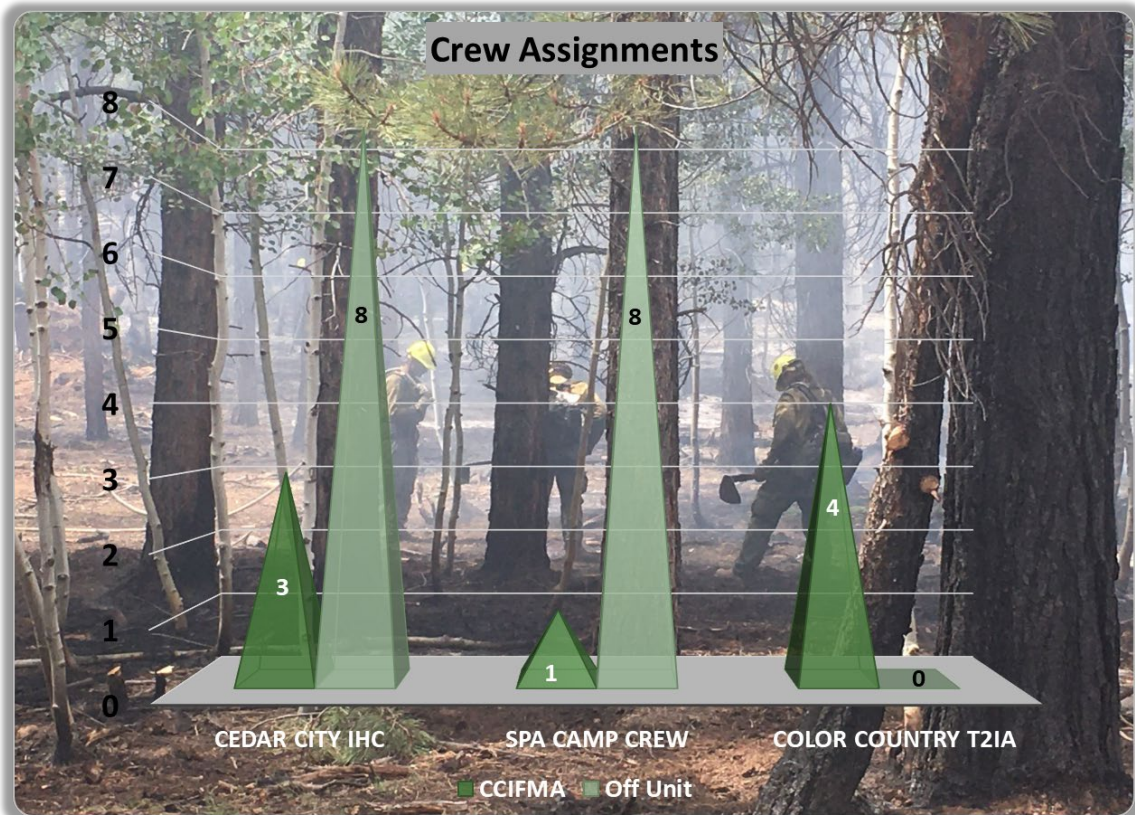
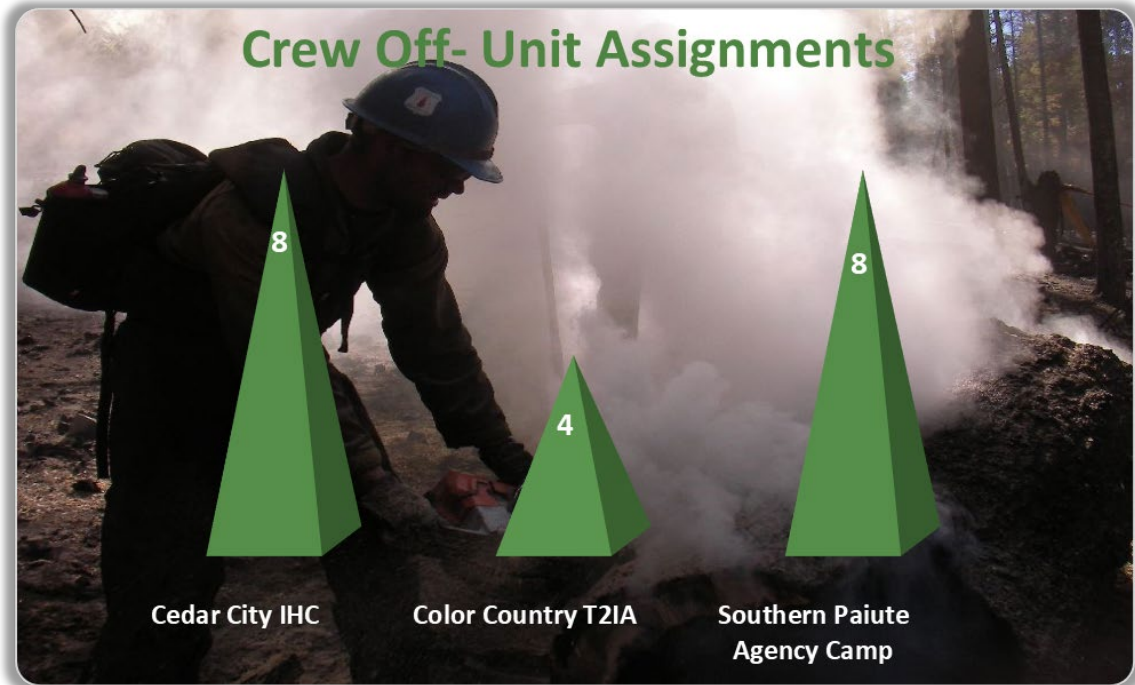


Ten Year Comparison



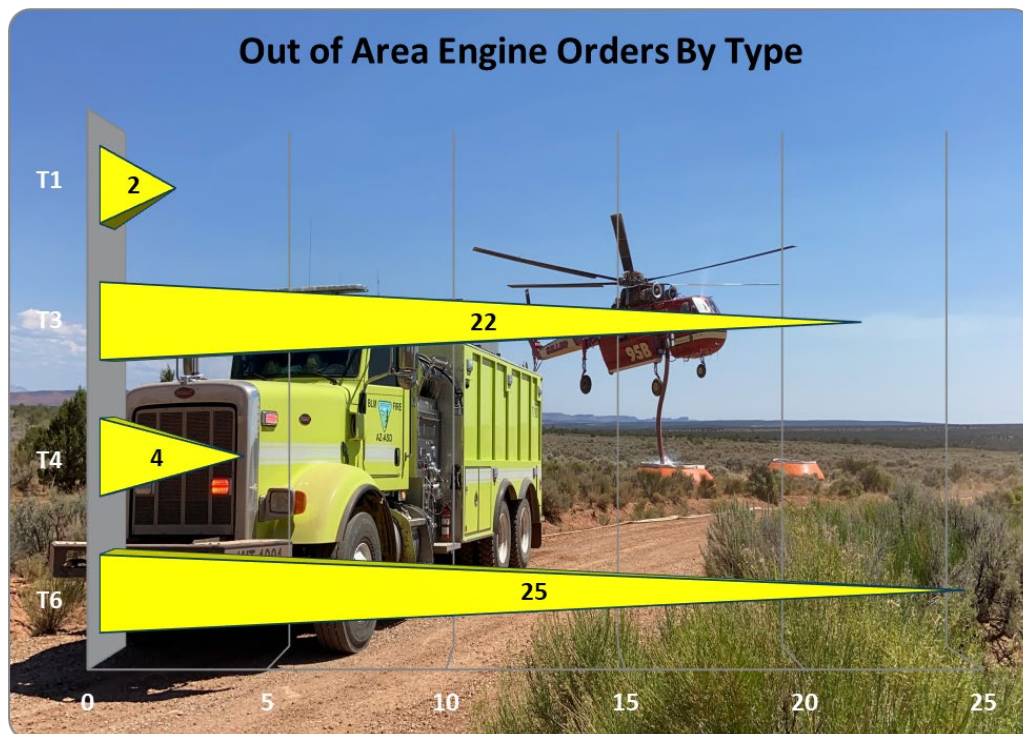
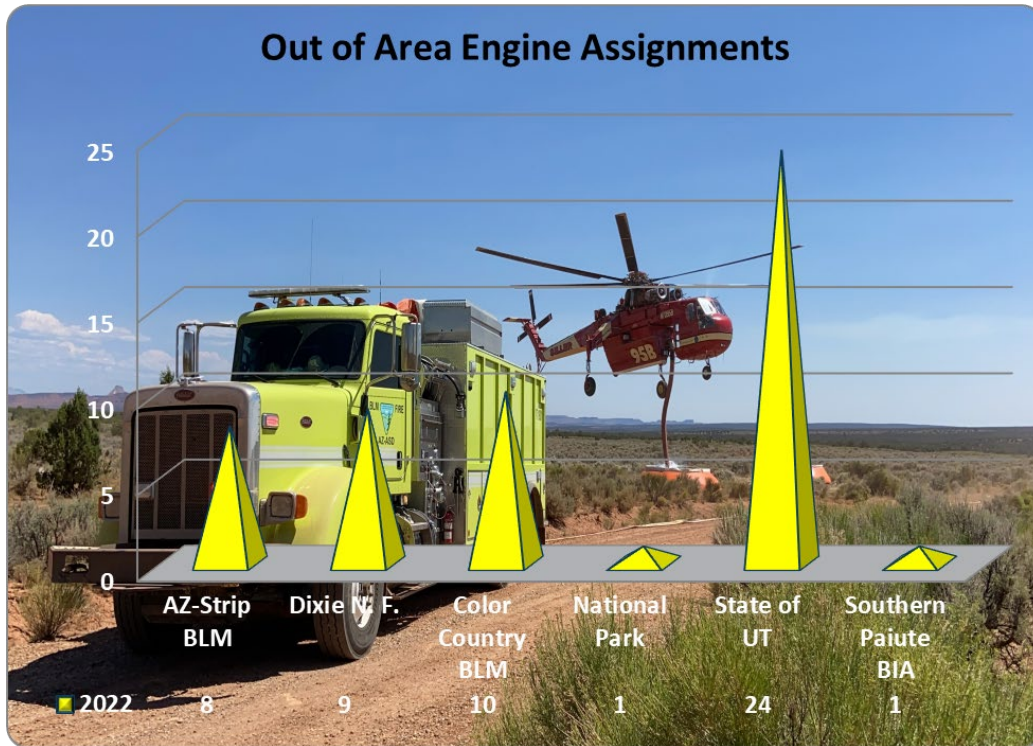
Crews

Color Country Interagency Fire Center filled 12 fire crews and 8 camp crew orders for non-local incidents with local resources. These orders do not include local resources sent during Initial Attack, which are not captured in IROC. The chart below does not capture reassignments while off unit.



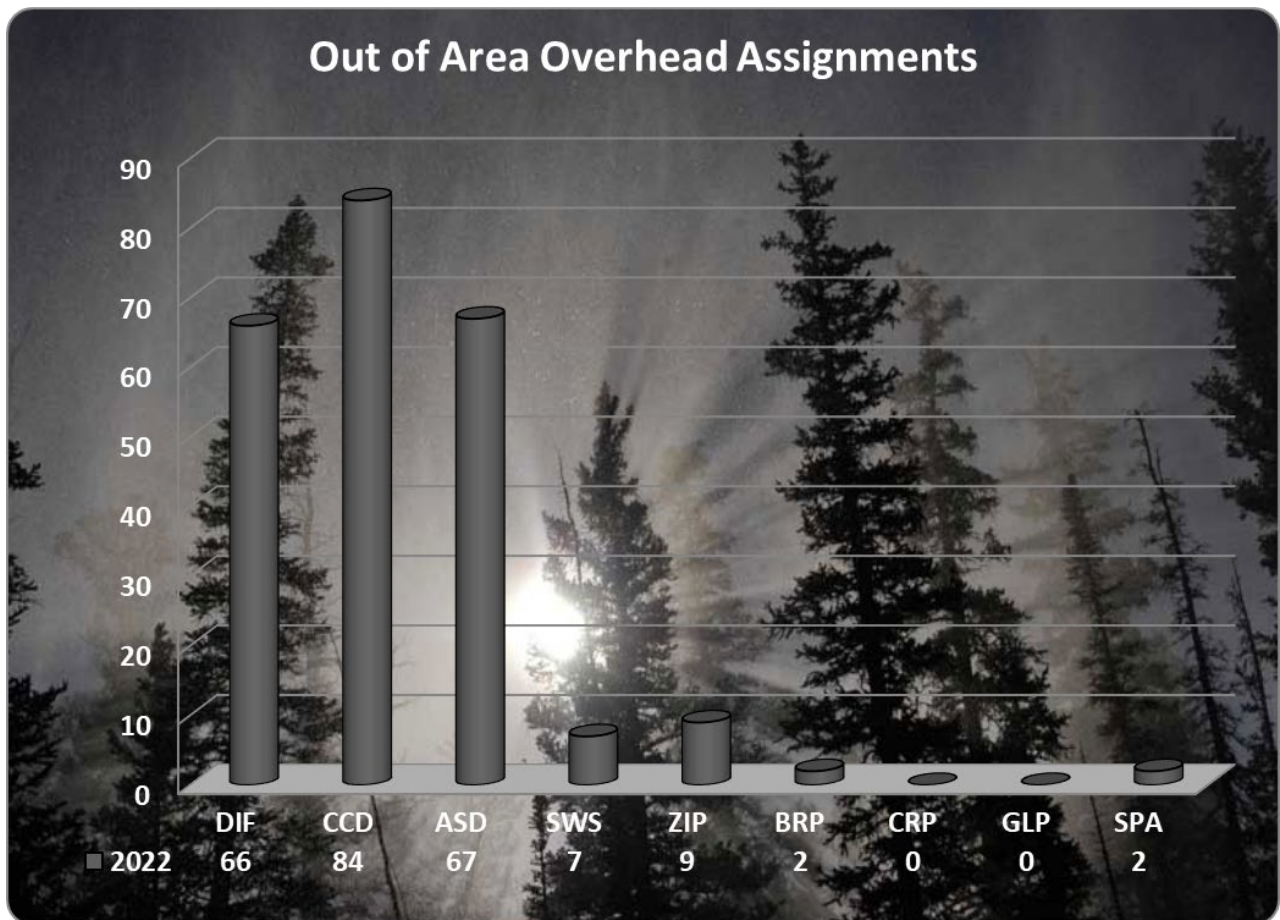
Equipment

Color Country Interagency Fire Center filled 57 Engine orders non-local incident orders with local agency/cooperator equipment in IROC. These orders do not include the multiple engine personnel swaps that occurred. These orders do not include local resources sent during Initial Attack.



Overhead

Color Country Interagency Fire Center filled 237 overhead resources on non-local incident in 2022 (reassignments while off unit are not included). The number of overhead orders filled were below the agencies averages. These orders do not include local resources sent during Initial Attack, which are not captured in IROC.



5 & 10 YEAR AVERAGES

CCIFC Averages	Natural Fires	Natural Acres	Human Fires	Human Acres	Fires	Acres
2022 Fire Season	199	2,327	81	4,775	280	7,102
5 Year Average	181	21,792	137	11,814	318	33,605
10 Year Average	184	13,147	118	13,425	302	26,572

Arizona Strip BLM	Years	Average Fires	Average Acres
5 Year	2018-2022	42	11,022
10 Year	2013-2022	47	6,151

Dixie National Forest	Years	Average Fires	Average Acres
5 Year	2018-2022	45	4,715
10 Year	2013-2022	43	9,328

National Parks	Years	Average Fires	Average Acres
5 Year	2018-2022	13	350
10 Year	2013-2022	16	206

Utah Southwest State	Years	Average Fires	Average Acres
5 Year	2018-2022	104	3,292
10 Year	2013-2022	89	2,623

Southern Paiute Agency	Years	Average Fires	Average Acres
5 Year	2018-2022	6	18
10 Year	2013-2022	6	27

Arizona State A1S District	Years	Average Fires	Average Acres
5 Year	2018-2022	5	494
10 Year	2013-2022	3	247

Color Country Paria River Fire & Aviation Management Area	Years	Average Fires	Average Acres
5 Year	2018-2022	104	13,714
10 Year	2013-2022	98	7,989

Color Country BLM	Years	Average Fires	Average Acres
5 Year	2018-2022	26	2,748
10 Year	2013-2022	13	1,374

Paria River BLM	Years	Average Fires	Average Acres
5 Year	2018-2022	18	107
10 Year	2013-2022	9	54

Land Ownership Protection Report
 (summary of acres by states)
 (Ref. FSM 5183.1)

Submitted by:	Tina Greenhalgh	Kevin Greenhalgh
Title:	Color Country Interagency Fire Center Manager	Dixie N.F. FMO

USDA-FOREST SERVICE								Calendar Year	2022
FOREST/STATE:	INSIDE FOREST PROTECTION BOUNDARIES PROTECTED BY THE FOREST SERVICE State and Private Land (Include county and municipal land)							S&P LAND PROTECTED BY STATE AND FS (Under mutual assistance agreements)	NATIONAL FOREST LAND PROTECTED BY OTHERS
	Fee Basis	Offset Basis	Reimbursement Suppression Costs Only	Without Reimbursement	Other Federal Land	National Forest Land	Total		
	Dixie N.F.						1,884,467	1,884,467	84,444
							0		
							0		
							0		
							0		
							0		
							0		
							0		
							0		
							0		
							0		
							0		
							0		
							0		
							0		
							0		
							0		
							0		
							0		
							0		
							0		
							0		
							0		
							0		
							0		
							0		
							0		
							0		
							0		
TOTAL	0	0	0	0	0	1,884,467	1,884,467	84,444	0

SDA-Forest Service <p style="text-align: center;">PERSONNEL EMPLOYED ON WILDFIRE PRESUPPRESSION AND SUPPRESSION ACTIVITIES</p>	UNIT Dixie National Forest CALENDAR YEAR 2022
---	--

INSTRUCTIONS: 1. Data for items 1a, 1b, and 2b should be taken from planning and budget records in the Supervisor's Office.

2. Items 1c, 1d, 2b, and 2c may be obtained from actual records in the S.O. or from the Ranger District. If obtained from the Ranger having intimate knowledge on use of his personnel, these items may be estimated. Complete accuracy is not required.

3. Item 3 may be estimated where large numbers of casuals are employed. Since each reemployment counts as a new employment, sufficient accuracy can be obtained by sample counts and measurement of time slips.

ITEM NO.	ITEM	NUMBER	
		SUB-TOTAL	TOTAL
1.	Regular appointed personnel		
	a. Full-time fire management (<i>20 pay periods or more</i>)	37	
	b. Part-time fire management	18	
	c. Others used on presuppression sometime during year	10	
	d. Others used on suppression (<i>exclude those reported under a, b, or c</i>)	22	
	e. Total (<i>a + b + c + d</i>)		87
2.	Seasonal or short-term personnel		
	a. Regular fire control (<i>crews, firefighters, patrol, lookouts, etc.</i>)	34	
	b. Others (<i>BD, KV, BR, R&T, etc.</i>) who spent time on fire control work	6	
	c. Emergency firefighters (<i>exclude those reported under a or b</i>)	7	
	d. Total (<i>a + b + c</i>)		47
3.	Total number of casuals employed on fire suppression (<i>Each reemployment counts as an employment</i>)		35
4.	Number of casuals (<i>included in Item 3</i>) employed for first time (<i>Ranger's estimate is adequate</i>)	9	
5.	GRAND TOTAL (<i>1e + 2d + 3</i>)		169

REMARKS (if necessary)

Includes Cedar City IHC as well as regular Forest Service resources.

SUBMITTED BY (Signature) <u> /S/ Kevin P. Greenhalgh </u>	TITLE Forest Fire Management Officer
---	--

